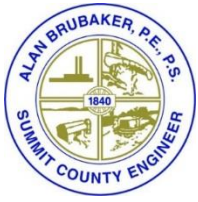


**Surface Water Management District
Copley Ditch (County Ditch No. 45)
Drainage Improvement Project**

Ground-View Photos



Copley Ditch

Ground-View Photos

Looking west: Downstream of Jacoby Rd culvert



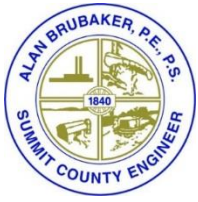


Copley Ditch

Ground-View Photos

OSFL Property – No Proposed Improvements



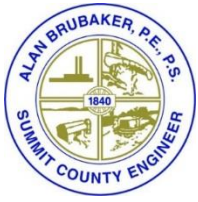


Copley Ditch

Ground-View Photos

Eroded left descending bank (north bank), Wealthy Dr.



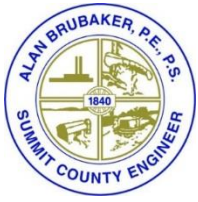


Copley Ditch

Ground-View Photos

Log jams and woody debris in Copley Ditch, parallel to (south of) Wealthy Dr.





Copley Ditch

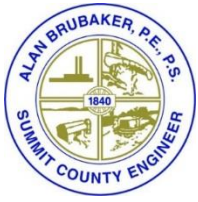
Ground-View Photos



Above: Sunnyacres Rd culvert, upstream



Right: Sunnyacres Rd culvert, downstream



Copley Ditch

Ground-View Photos

Ex. Wetland, looking south from Sunnyacres Rd dead-end

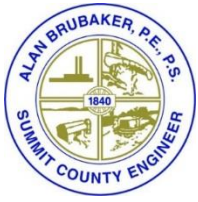




Copley Ditch Ground-View Photos



Looking north: Left descending bank erosion/high bank

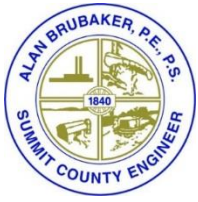


Copley Ditch

Ground-View Photos

Looking south: Left descending bank erosion/high bank

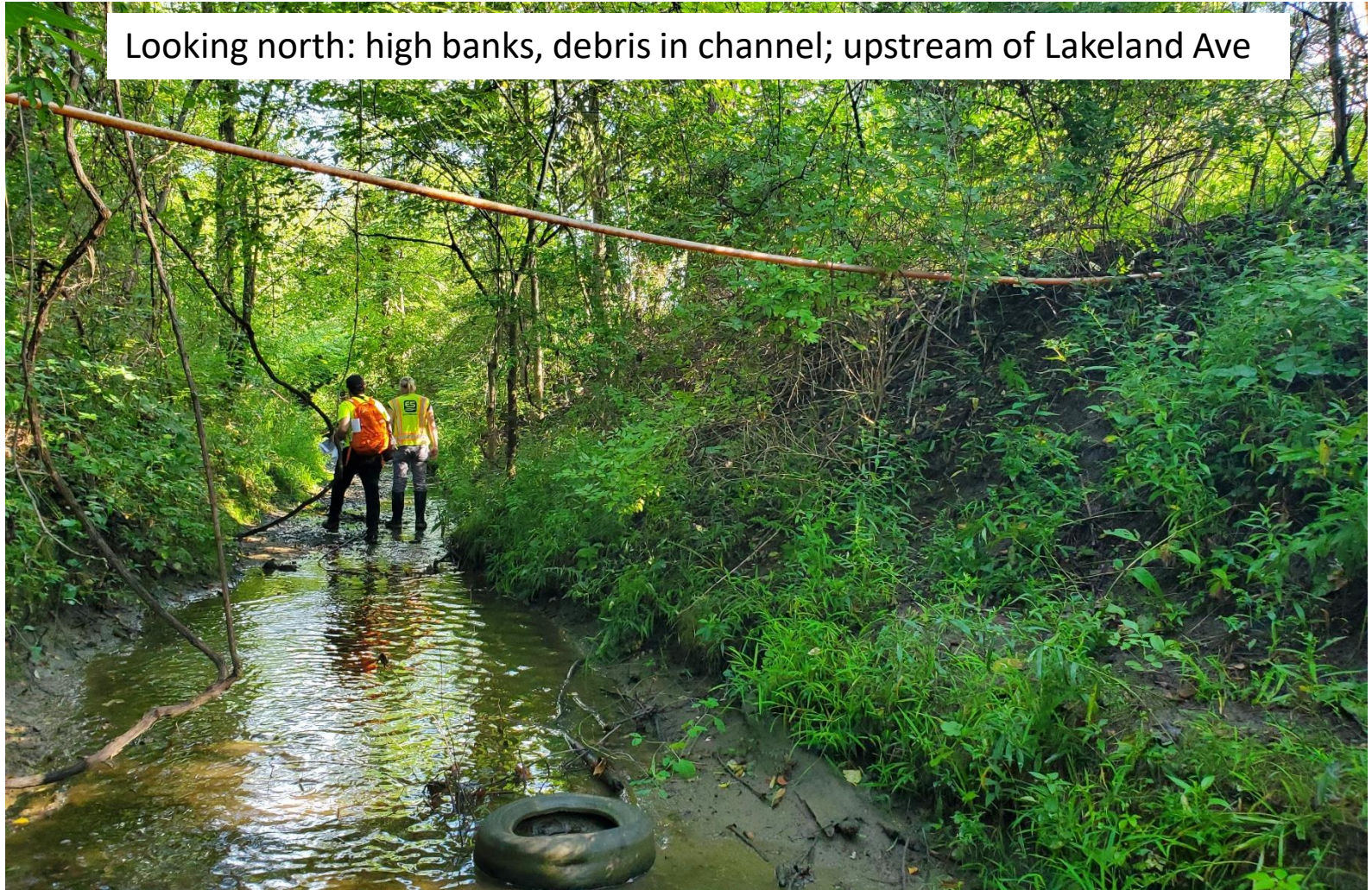




Copley Ditch

Ground-View Photos

Looking north: high banks, debris in channel; upstream of Lakeland Ave





Copley Ditch Ground-View Photos

Looking south: narrow channel, upstream of Wright Rd





Copley Ditch Ground-View Photos



Above: Looking northwest at channel / Panzner Wetland Wildlife Preserve (opposite bank)

Left: Looking southwest at channel south of Wright Rd



Copley Ditch Ground-View Photos

