

**Surface Water Management District
Hinman Ditch (County Ditch No. 52)
Drainage Improvement Project**

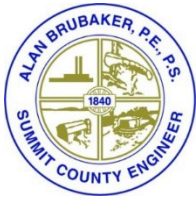
**Special Meeting May 13, 2025 10:00 AM to 11:00AM
Coventry Senior Citizens Center**

**Alan Brubaker, PE, PS - Summit County Engineer
David Koontz, PE, SI - SWMD Coordinator
Charles Hauber, PE, PS, Engineering Project Manager
Stephanie Deibel, Stormwater Specialist**



Hinman Ditch Overall Project Area

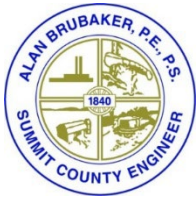




Hinman Ditch

Description and Benefits

- The channel will be cleaned and obstructions removed, such as trees, debris and sandbars.
- A portion of the channel will be regraded and channel banks will be rebuilt to restore positive flow and adequate capacity.
- The channel improvements will include measures to stabilize the streambanks and mitigate erosion.
- One SWM basin will be constructed and an existing SWM basin will be modified to reduce peak flow and velocity in the ditch.
- The project will include improved access for more effective long-term maintenance.
- These measures will help to reduce flooding and erosion and will thereby improve stream water quality.



Hinman Ditch Costs

- The Project Cost is estimated to be approximately \$2,000,000 for design and construction.
- SWMD will pay all planning, design, permitting and construction costs of the project.
- SWMD revenues will cover the cost of long-term maintenance of the improvements.
- We are following the Petitioned Drainage Improvement process, defined in Ohio Revised Code 6131, but without assessments to the benefitting property owners for construction or maintenance of the project.



Hinman Ditch Easements

- Easements will be obtained under the ORC 6131, to give Summit County the right & responsibility to maintain this length of improved stream.
- There will be an easement plat instead of individual easement descriptions & exhibits, and owners won't sign.
- The easements along the stream are proposed to be 60-feet wide, to replace an existing 60-feet wide county ditch right-of-way within a riparian corridor and flood zone. No compensation will be offered for these easements.
- Other easements, such as access easements not along the stream, will be compensated at amounts determined by an independent appraiser. The owners will have opportunities to appeal the amounts.



Hinman Ditch

Petition Steps and Tentative Meeting Dates

- 5/13/25 – Coventry Twp. trustees signed petition for improvements.
- 5/15/25 – Petition filed with Summit County Council.
- 7/24 or 8/7/25 4:30 PM - Public Viewing in Coventry Twp. Hall.
- 9/22/25 4:30 PM – First Hearing at Summit County Council. SWMD will present the Preliminary Report stating project's necessity and public benefit.
- Public comments can be made in writing to the council clerk before the meeting or in person at the hearing.
- 10/6/25 - Council vote to either proceed with the design or to dismiss the petition.
- January 2026 – SWMD will submit the Final Report (if authorized in Oct 2025) including final plans, construction cost estimate, easement plat and schedule of estimated damages and compensation for easements.
- March 2026 – Final Hearing at Summit County Council. SWMD will present the Final Report. Council will vote whether to accept the plans and easement plat and proceed with project bidding, or to dismiss the petition.
- There is a process available to appeal any council action.

Meeting Notices Will Be Mailed to Affected Property Owners and published in the newspaper.

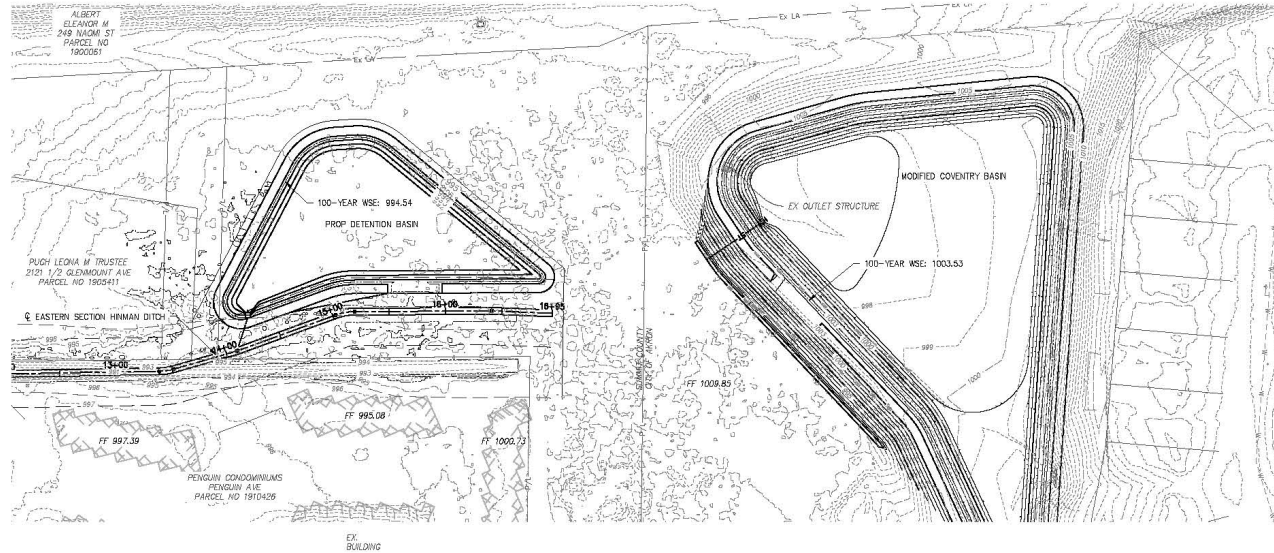
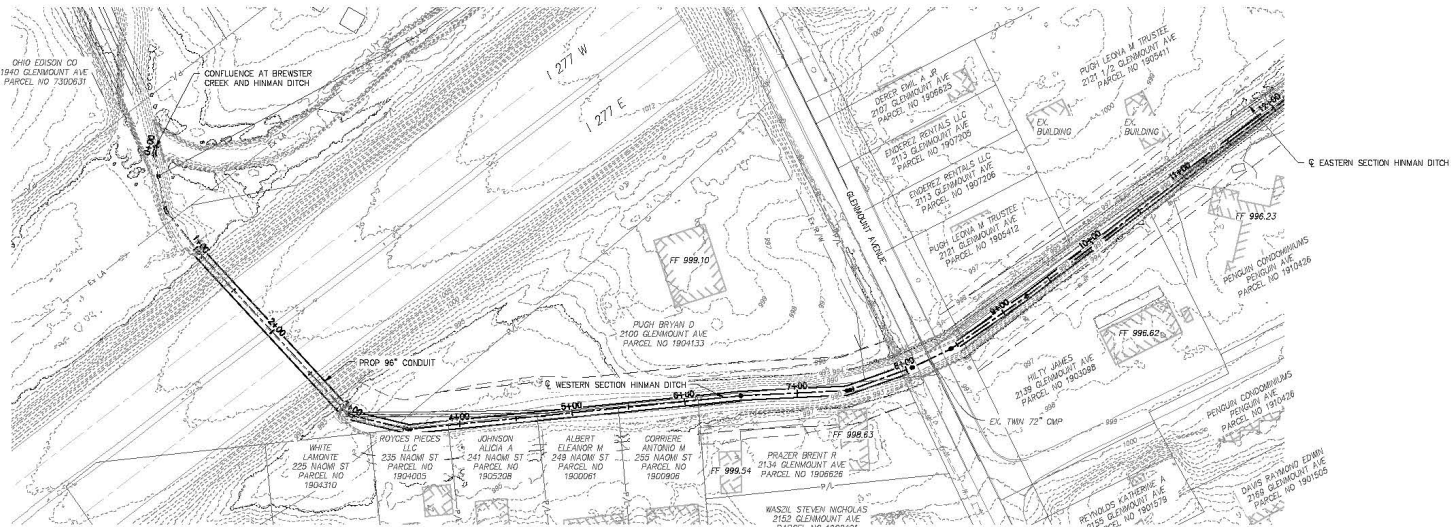
Meeting Dates and Times Subject to Change.



Hinman Ditch

Engineering Steps

- 2023 – EDG, Inc. hired for the study, engineering permit coordination and plan preparation.
- July, 2023 - started field reconnaissance and hydrologic & hydraulic study
- October, 2023 – Conceptual Plans
- June, 2024 – Draft Preliminary Plan
- January, 2025 – Preliminary Report
- Fall, 2025 – Final Plans to be completed



SW Basin & Channel Himnan Ditch (Ditch #52) SUMMIT COUNTY



PRELIMINARY PLAN

DATE: _____		
REVISIONS		
Δ	DATE	DESCRIPTION

PROJECT NO.: 22-00030-010
DRAWN BY: DWA
CHECKED BY: JO
DATE ISSUED: MAR 25, 2025

SCHEMATIC PLAN

5 OF 13



NOT FOR CONSTRUCTION



Figure 3 Existing Conditions 100-Year Water Surface - HEC-RAS Model



Figure 4 Proposed Conditions 100-Year Water Surface - HEC-RAS Model

SW Basin & Channel Hinman
Ditch (Ditch #52)
SUMMIT COUNTY

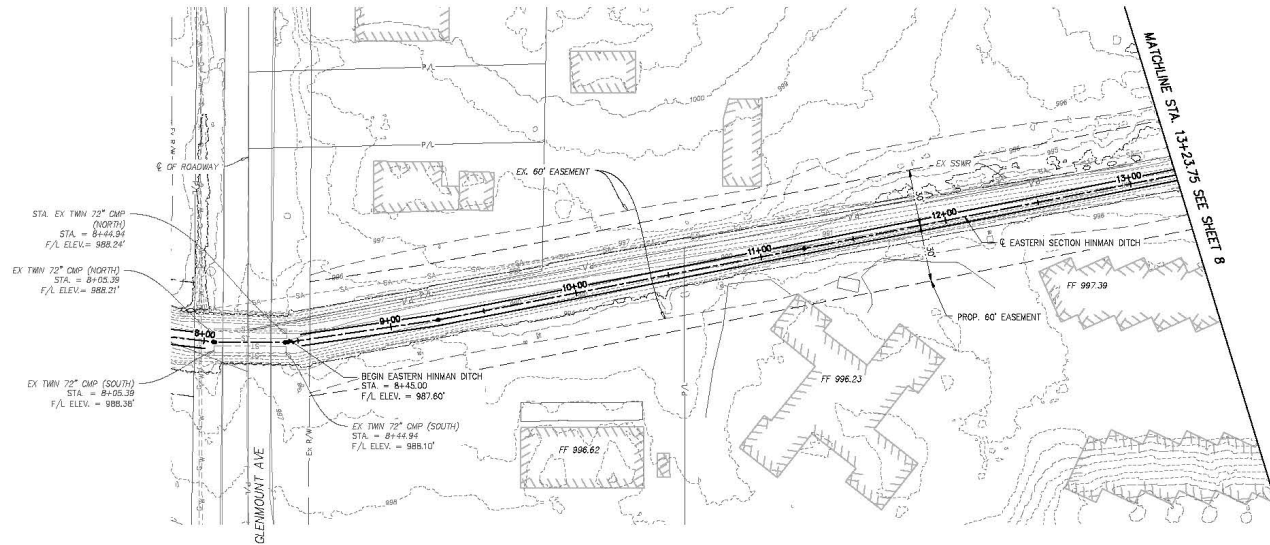


PRELIMINARY PLAN

DATE:	
REVISIONS	
Δ DATE DESCRIPTION	
• • •	
• • •	
• • •	
• • •	
• • •	
• • •	
• • •	
• • •	
PROJECT NO.:	22-00030-010
DRAWN BY:	DWA
CHECKED BY:	JO
DATE ISSUED:	APR 25, 2025

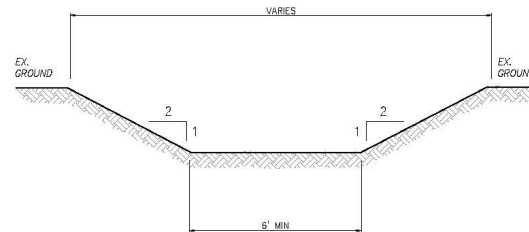
SITE PLAN

7 OF 13



EASTERN HINMAN DITCH F/L DATA	
STATION	F/L ELEV.
8+45.00	987.60
9+00.00	987.54
9+50.00	987.53
9+50.00	988.23
10+00.00	988.53
10+50.00	988.89
11+00.00	989.13
11+50.00	989.43
12+00.00	989.73
12+50.00	990.03
13+00.00	990.33

NOTE: CONTRACTOR TO CLEAN A NORTH & SOUTH EX. 72" CMP CONDUITS UNDER GLENMOUNT AVE. ALL SILT AND SEDIMENT SHALL BE REMOVED AND EXISTING FLOWLINES SHALL BE MAINTAINED. NO MODIFICATIONS TO THE EXISTING CONDUITS SHALL BE MADE.



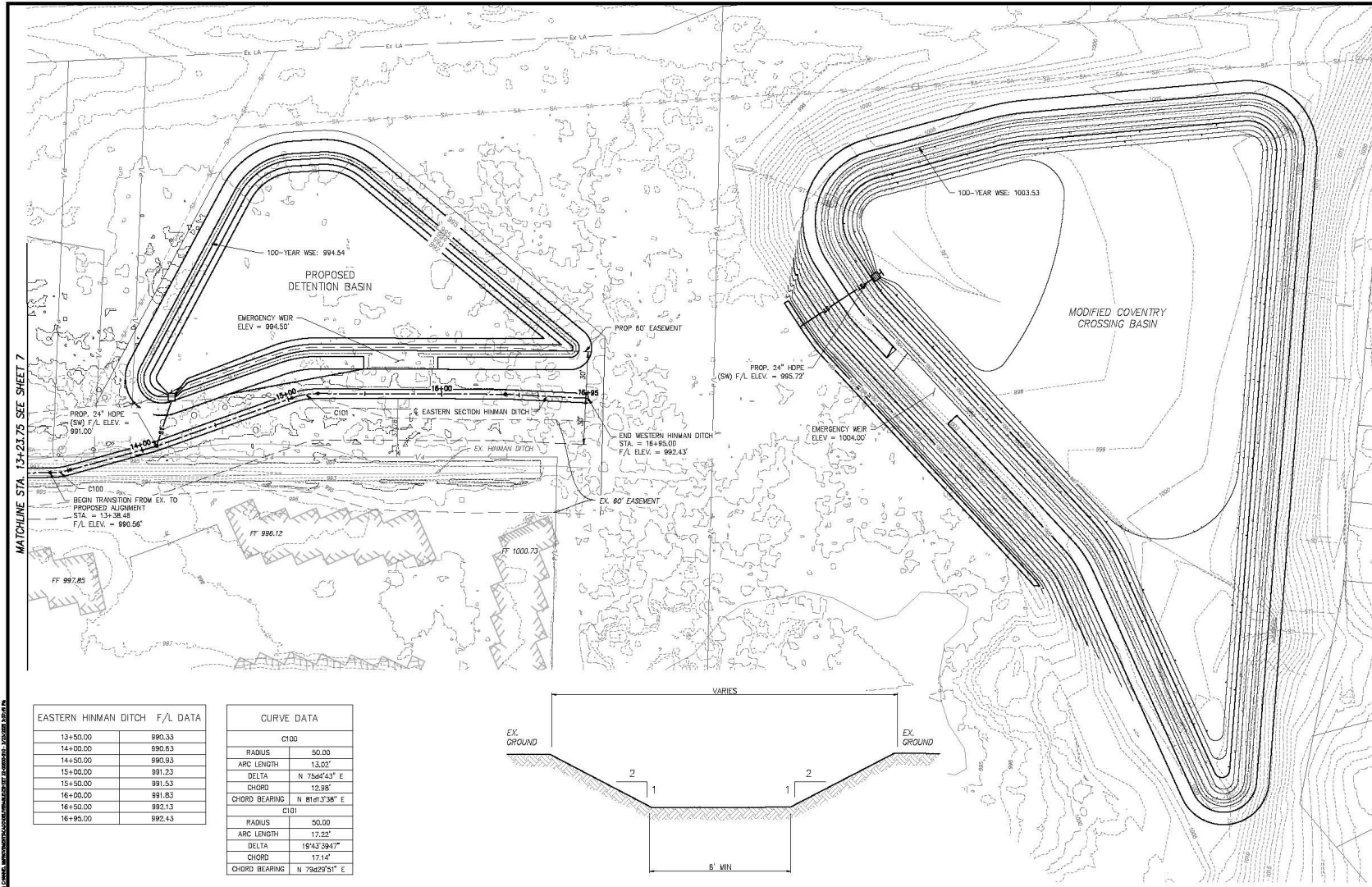
EASTERN HINMAN DITCH SECTION

NOT TO SCALE



0 30 60
GRAPHIC SCALE IN FEET

NOT FOR CONSTRUCTION



EASTERN HINMAN DITCH F/L DATA

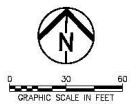
13+50.00	990.33
14+00.00	990.63
14+50.00	990.93
15+00.00	991.23
15+50.00	991.53
16+00.00	991.83
16+50.00	992.13
16+95.00	992.43

CURVE DATA

C100	
RADIUS	50.00
ARC LENGTH	13.02'
DELTA	N 75d44'3" E
CHORD	12.98'
CHORD BEARING	N 81d13'38" E
C101	
RADIUS	50.00
ARC LENGTH	17.33'
DELTA	S 94d38'47" W
CHORD	17.14'
CHORD BEARING	N 79d29'51" E

NOTE: CONTRACTOR SHALL REMOVE EXISTING OUTLET STRUCTURE AND ALL ASSOCIATED PIPING FROM COVENTRY CROSSING DETENTION BASIN. ALL WORK ASSOCIATED WITH THIS TASK SHALL BE PAID THROUGH ITEM 202 DETENTION BASIN STRUCTURE REMOVAL AS PER PLAN.

EASTERN HINMAN DITCH SECTION
NOT TO SCALE



Environmental Design Group
The community impact people.
800.835.1390
envdesigngroup.com

PLAN BRUBAKER, P.E., S.E.
SUMMIT COUNTY ENGINEER

**SW BASIN & CHANNEL
HINMAN DITCH (DITCH #52)
SUMMIT COUNTY**

PRELIMINARY PLAN

DATE: _____

REVISIONS	
DATE	DESCRIPTION

PROJECT NO.: 22-0000-010

DRAWN BY: SWA

CHECKED BY: JD

DATE ISSUED: MAR 25, 2025

SITE PLAN

8 OF 13

NOT FOR CONSTRUCTION



Hinman Ditch

Q&A

- Questions?
- For more information, please visit our project webpage at <https://www.summitengineer.net/projects/SWMD-Penguin-Area-Improvements.html>

