



SUMMIT COUNTY AND BRIDGES

Jeremiah Stonestreet



AGENDA

3	INTRO
4	BRIDGE CREW
6	WHAT WE DO
11	SMALL PROJECTS
14	THE HIGH LEVEL BRIDGE
15	CONCRETE, WINGWALL, AND ABUTMENT REPAIRS
16	GROUT JOBS
17	EMERGENCY JOBS
18	QUESTIONS



JEREMIAH STONESTREET

- Position: Highway Maintenance Crewleader
- Years in public service: 28yrs
- Years on the bridge Crew: 25

THE SUMMIT COUNTY BRIDGE CREW

- The Bridge Crew consists of 5 people.
 - 1 Foreman
 - 1 Crew leader
 - 3 Bridge Workers
- The Summit County Bridge Crew has a combined 95 years of experience!





WHAT WE DO:

- Services 280 bridges
- Tree and Brush Clearing
- Log Jams
- Guardrail and Signage
- High-Level Semi-Annual Maintenance
- Concrete/Wingwall/Abutment Repairs
 - Guniting
- Grout Pump
- Emergency Jobs



THE SMALL PROJECTS

- Fence Repairs
- Deck Washing
- Beam Washing

LOG JAMS



FENCE REPAIRS



SHORING PROTECTION

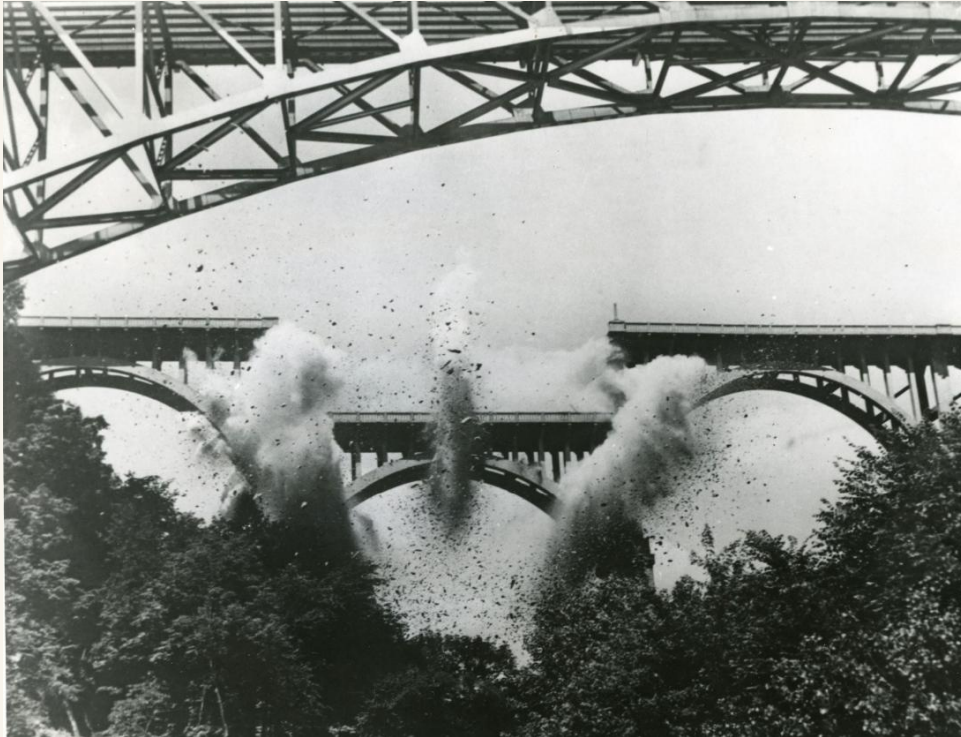




THE HIGH-LEVEL BRIDGE

- Fence Repairs
- Deck Washing
- Beam Washing
- Greasing at 4 Joints and at 4 Corners of Middle Span
- Greasing of underground vaults
- Anchor Pin Vaults

THE HIGH-LEVEL BRIDGE



FACTS

- Originally constructed in 1948-1949 for \$2,000,000.
- Stands 220ft above the Cuyahoga River.
- Connects the Summit County's two largest Cities (Akron and Cuyahoga Falls.)
- Classified as a fracture critical structure.
 - Meaning if one member/part of the bridge fails, the entire bridge fails.
- Had a major rehabilitation completed in 1995 at a cost of \$10,000,000

THE HIGH-LEVEL BRIDGE



STATS

- It carries an average of 17,000 vehicles per day
- The bridge is 909 ft long, and 67 ft wide
- Its roadway consists of 4 lanes of traffic and two pedestrian walkways
- The bridge consists of a three-span steel truss structure
 - Two 180-ft. cantilever arch spans
 - One 120-ft. suspended span with massive steel eye bar anchorage units embedded in concrete at both ends.

THE HIGH-LEVEL BRIDGE



COSTS

- Overall costs on inspecting and maintaining this structure annually is over \$100,000
- Painting the current bridge would cost around \$6,000,000
 - At minimum, zone painting the structure could cost \$1,100,000 or more
- In 2023 the Summit County Engineer awarded a contract of \$454,000 to complete preliminary engineering work

ABOUT THE HIGH-LEVEL BRIDGE





CONCRETE, WINGWALL, AND ABUTMENT REPAIRS

- Jackhammer
- Sand Blast
- Replace Rebar
- Add Mesh
- Gunitite

GUNITITE REPAIRS



GUNITITE REPAIRS



GUNITITE REPAIRS



GUNITITE REPAIRS



GUNITE REPAIRS



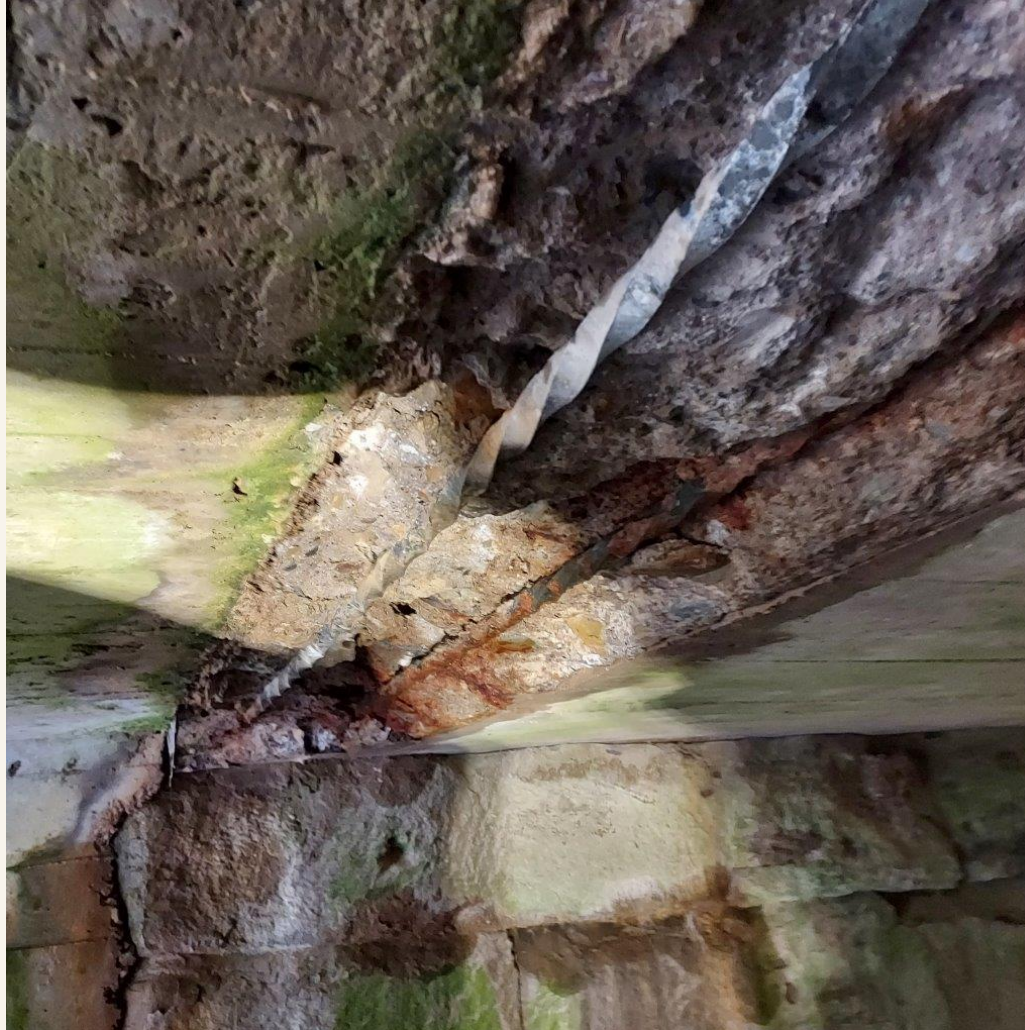
GUNITITE REPAIRS



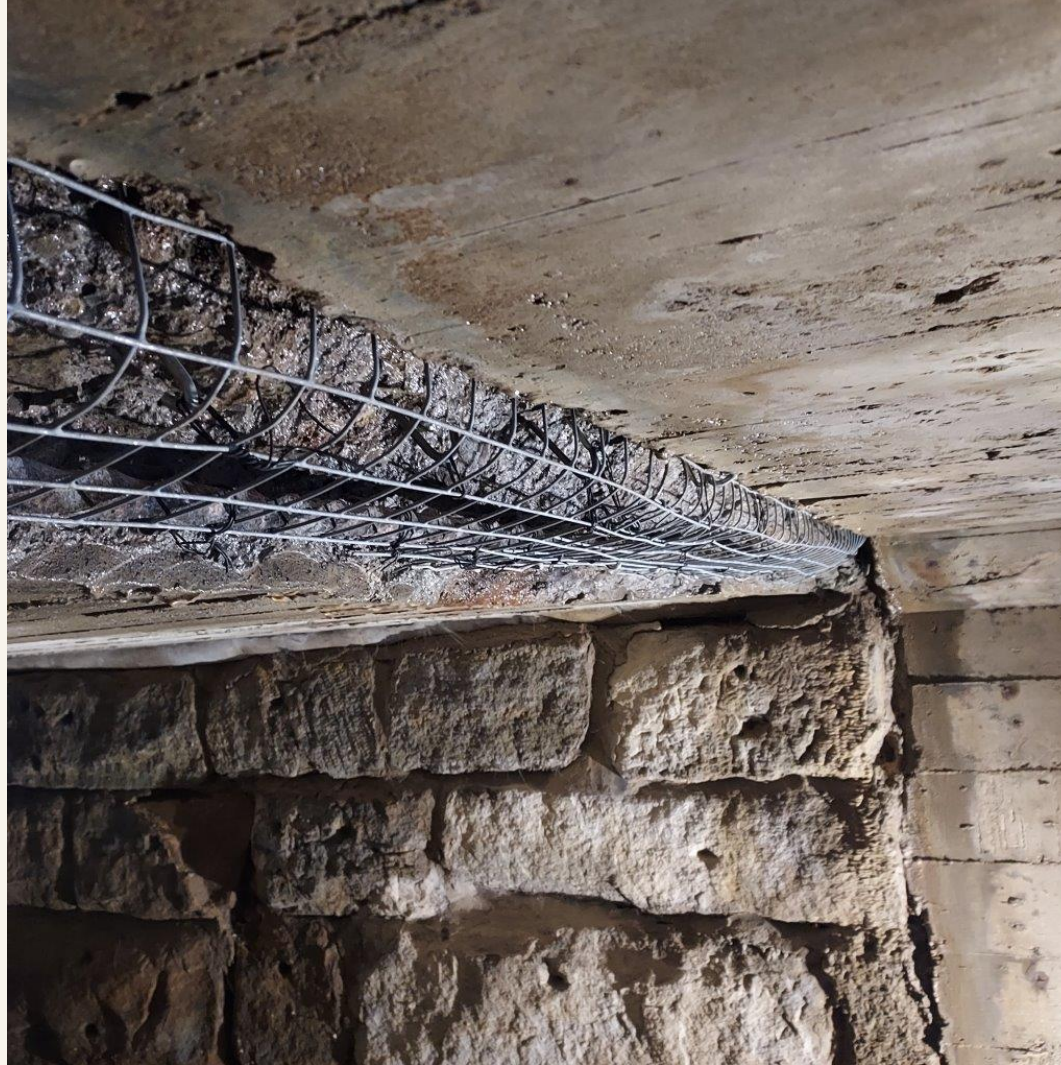
GUNITE REPAIRS



GUNITITE REPAIRS



GUNITITE REPAIRS



GUNITITE REPAIRS



GUNITITE REPAIRS



GUNITITE REPAIRS





GROUT JOBS

- Chem Grout GG-555
- 1:4-1:6 Portland Cement & Mason Sand
- Work Performed:
 - Fill voids (Sinkholes)
 - Grout Blankets (Shore Protection)
 - Grout Bags (Shore Protection)
 - Pipe Lining
 - Pier Jackets
 - Filling of Abandoned Culverts
 - Slab Jacking
 - Footer Scours

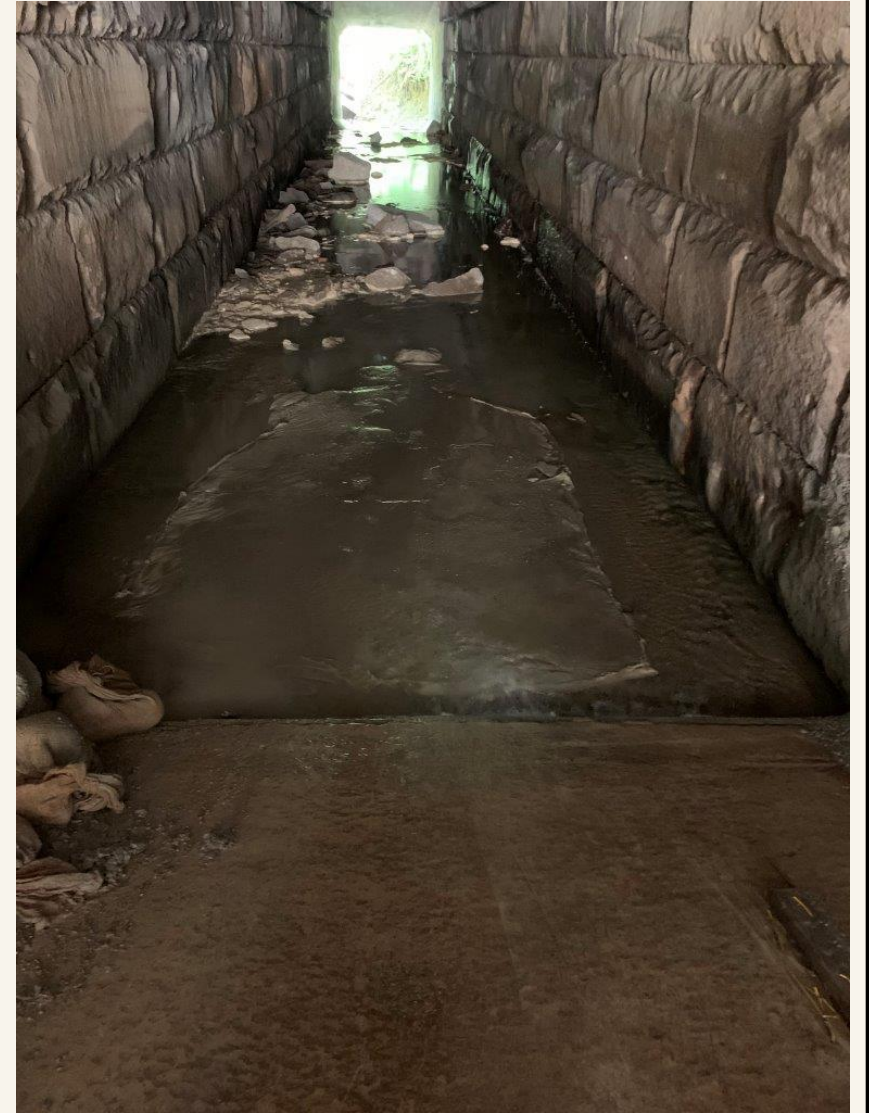
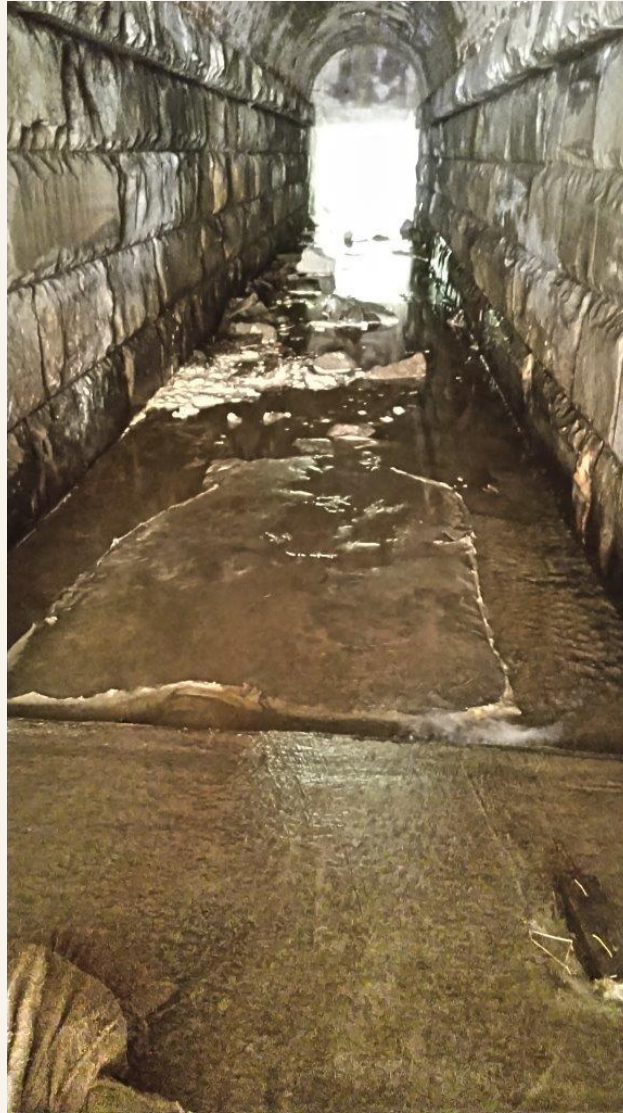
GROUT JOBS



GROUT JOBS



GROUT JOBS



GROUT JOBS



GROUT JOBS



GROUT JOBS



GROUT JOBS



GROUT JOBS



GROUT JOBS



GROUT JOBS





EMERGENCY JOBS

- Chem Grout GG-555
- 1:4-1:6 Portland Cement & Mason Sand
- Work Performed:
 - Fill voids (Sinkholes)
 - Grout Blankets (Shore Protection)
 - Grout Bags (Shore Protection)
 - Pipe Lining
 - Pier Jackets
 - Filling of Abandoned Culverts
 - Slab Jacking
 - Footer Scours

EMERGENCY JOBS



EMERGENCY JOBS



EMERGENCY JOBS



EMERGENCY JOBS



EMERGENCY JOBS



**Would you like
a copy of this
presentation?**

Scan the barcode or email:
aengelhart@summitengineer.net



QUESTIONS?