

**Surface Water Management District
Springfield Lake Outlet (County Ditch No. 45)
Drainage Improvement Project**

**Public Viewing Presentation April 17, 2025 4:00 PM
Springfield Township Trustees Meeting Room**

**Alan Brubaker, PE, PS - Summit County Engineer
David Koontz, PE, SI - SWMD Coordinator
Charles Hauber, PE, PS, Engineering Project Manager
Stephanie Deibel, Stormwater Specialist**



Springfield Lake Outfall Overall Project Area



Figure 1: Springfield Lake General Project Area



Springfield Lake Outfall Description and Benefits

- The channel will be cleaned and numerous obstructions removed, such as trees, debris and sandbars.
- A portion of the channel will be regraded and channel banks will be rebuilt to restore positive flow and adequate capacity.
- The channel improvements will include measures to stabilize the streambanks and mitigate erosion.
- The project will include improved access for more effective long-term maintenance.
- These measures will help to reduce flooding and erosion and will thereby improve stream water quality.



Springfield Lake Outfall Costs

- The Project Cost is estimated to be approximately \$1,400,000 for design and construction.
- SWMD will pay all planning, design, permitting and construction costs of the project.
- SWMD revenues will cover the cost of long-term maintenance of the improvements.
- We are following the Petitioned Drainage Improvement process, defined in Ohio Revised Code 6131, but without assessments to the benefitting property owners for construction or maintenance of the project.



Springfield Lake Outfall Easements

- Easements will be obtained under the ORC 6131, to give Summit County the right & responsibility to maintain this length of improved stream.
- There will be an easement plat instead of individual easement descriptions & exhibits, and owners won't sign.
- The easements along the stream are proposed to be 50-feet wide, to replace an existing 33-foot wide county ditch right-of-way within a riparian corridor and flood zone. No compensation will be offered for these easements.
- Other easements, such as access easements not along the stream, will be compensated at amounts determined by an independent appraiser. The owners will have opportunities to appeal the amounts.



Springfield Lake Outfall Petition Steps and Meetings

- 1/9/25 – Springfield Twp. trustees signed petition for improvements.
- 1/14/25 – Petition filed with Summit County Council.
- 4/17/25 4:00 PM - Public Viewing in Springfield Twp. Hall.
- 6/2/25 4:30 PM – First Hearing at Summit County Council. SWMD will present the Preliminary Report stating project's necessity and public benefit.
- Public comments can be made in writing to the council clerk before the meeting or in person at the hearing.
- 6/16/25 - Council vote to either proceed with the design or to dismiss the petition.
- January 2026 – SWMD will submit the Final Report (if authorized in June 2025) including final plans, construction cost estimate, easement plat and schedule of estimated damages and compensation for easements.
- February 2026 – Final Hearing at Summit County Council. SWMD will present the Final Report. Council will vote whether to accept the plans and easement plat and proceed with project bidding, or to dismiss the petition.
- There is a process available to appeal any council action.

Meeting Notices Will Be Mailed to Affected Property Owners and published in the newspaper.

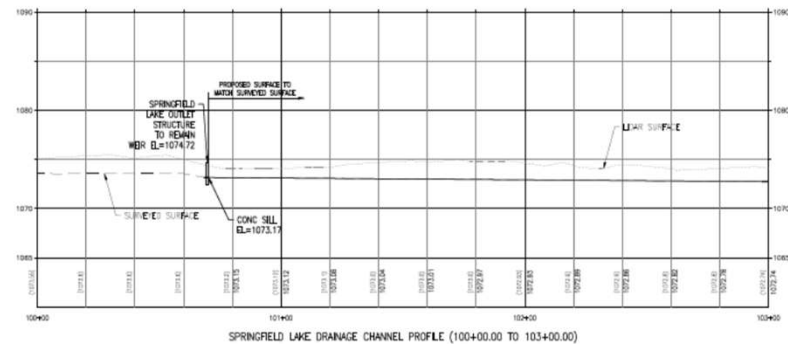


Springfield Lake Outfall Engineering Steps

- 2023 – DLZ Ohio, Inc. hired for the study, engineering permit coordination and plan preparation.
- July, 2023 - started field reconnaissance and hydrologic & hydraulic study
- October, 2023 – Conceptual Plans
- June, 2024 – Draft Preliminary Plan
- January, 2025 – Preliminary Report
- Fall, 2025 – Final Plans to be completed



Springfield Lake Outfall Proposed Channel Improvements

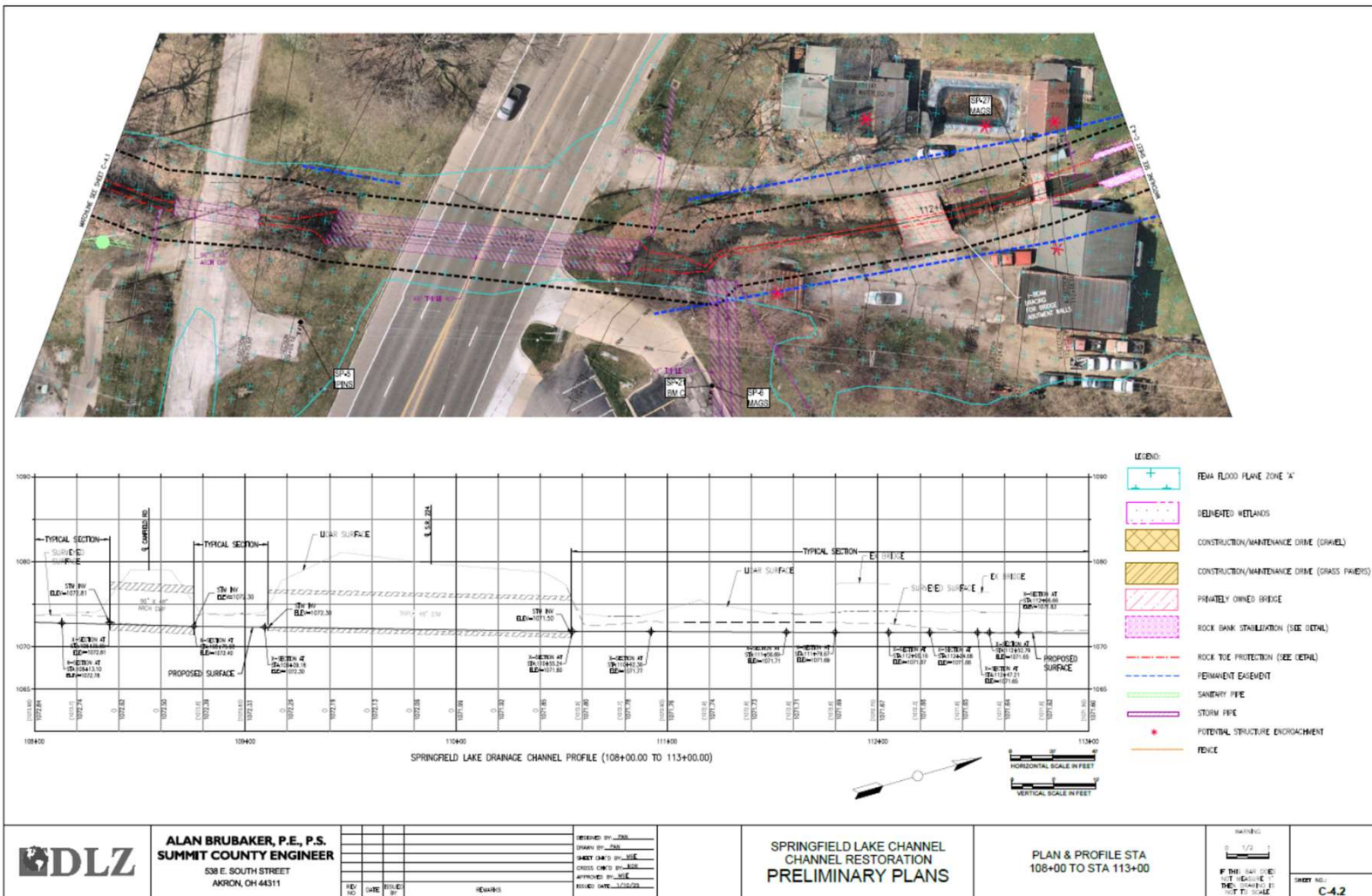


	ALAN BRUBAKER, P.E., P.S. SUMMIT COUNTY ENGINEER 538 E. SOUTH STREET AKRON, OH 44311					DESIGNED BY: <u> </u>	SPRINGFIELD LAKE CHANNEL CHANNEL RESTORATION PRELIMINARY PLANS	PLAN & PROFILE STA 100+00 TO STA 103+00	<div>SCALE 1" = 20'</div> <div>F THIS SHEET IS NOT A PART OF THE CONTRACT UNLESS NOTED OTHERWISE</div>	SHEET NO. C-4.0
						DRAWN BY: <u> </u>				
						CHECKED BY: <u> </u>				
						APPROVED BY: <u> </u>				
						DATE: <u> </u>				
		REV	DATE	REASON	BY	REMARKS				



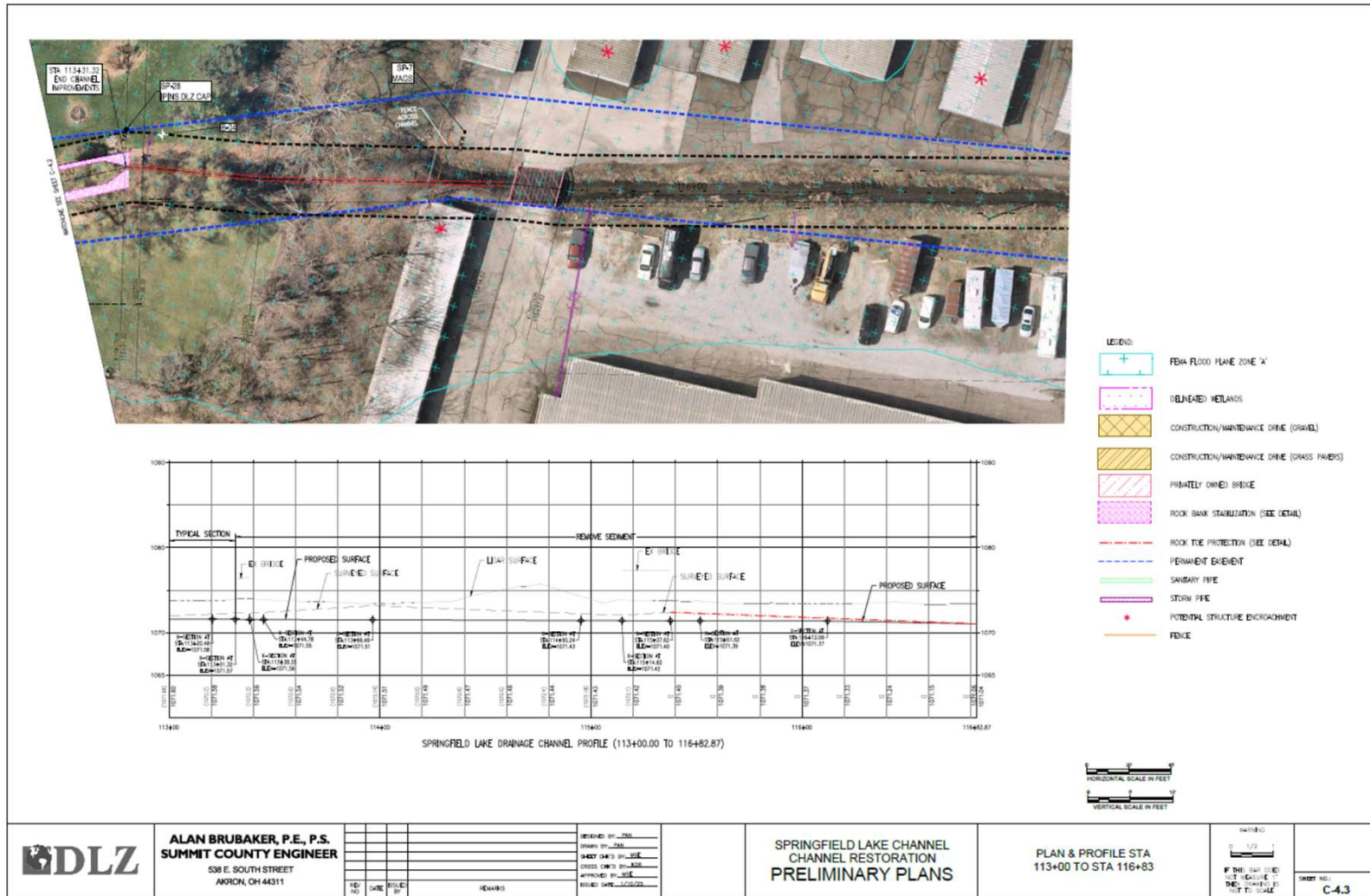


Springfield Lake Outfall Proposed Channel Improvements



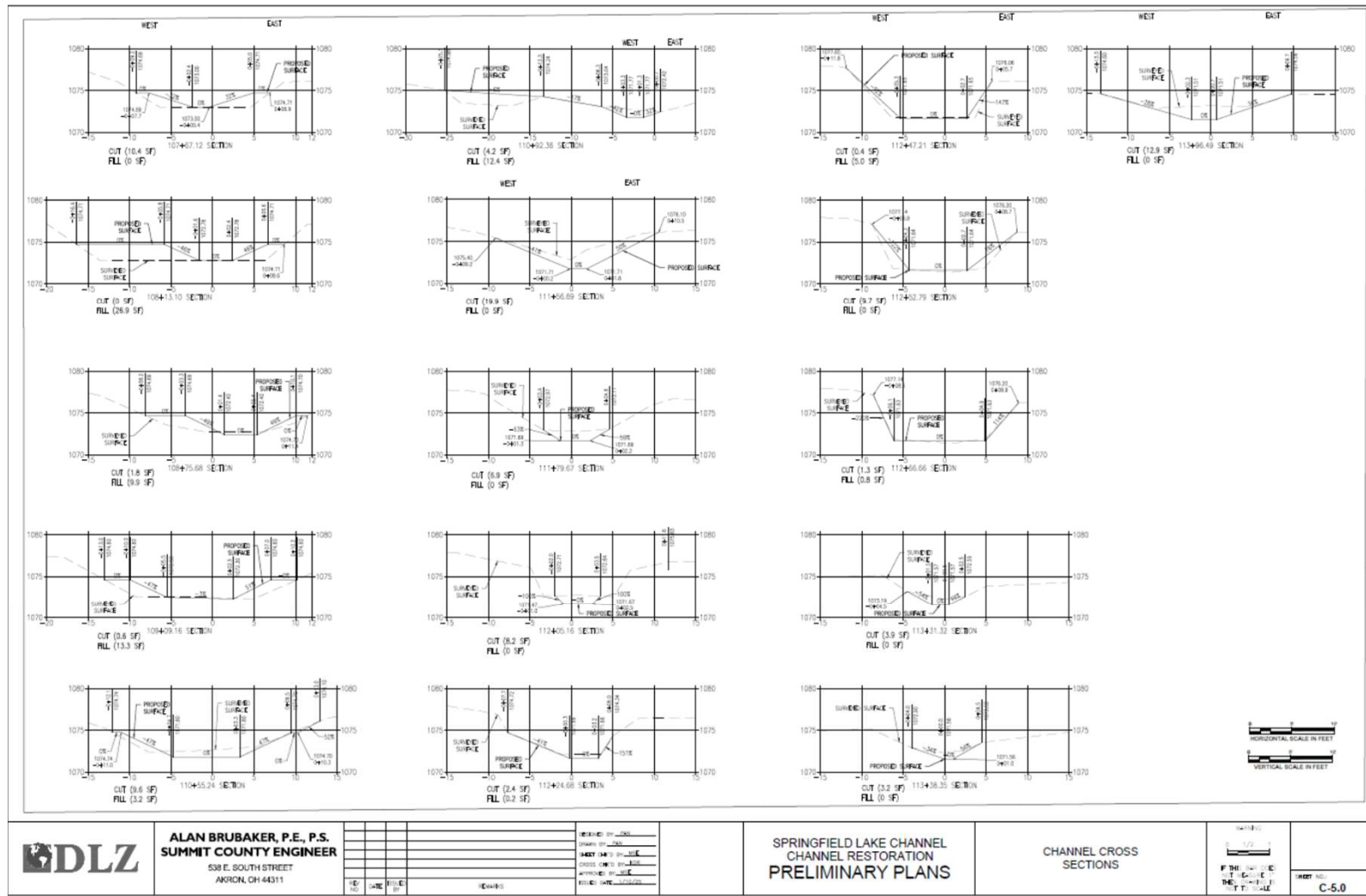


Springfield Lake Outfall Proposed Channel Improvements





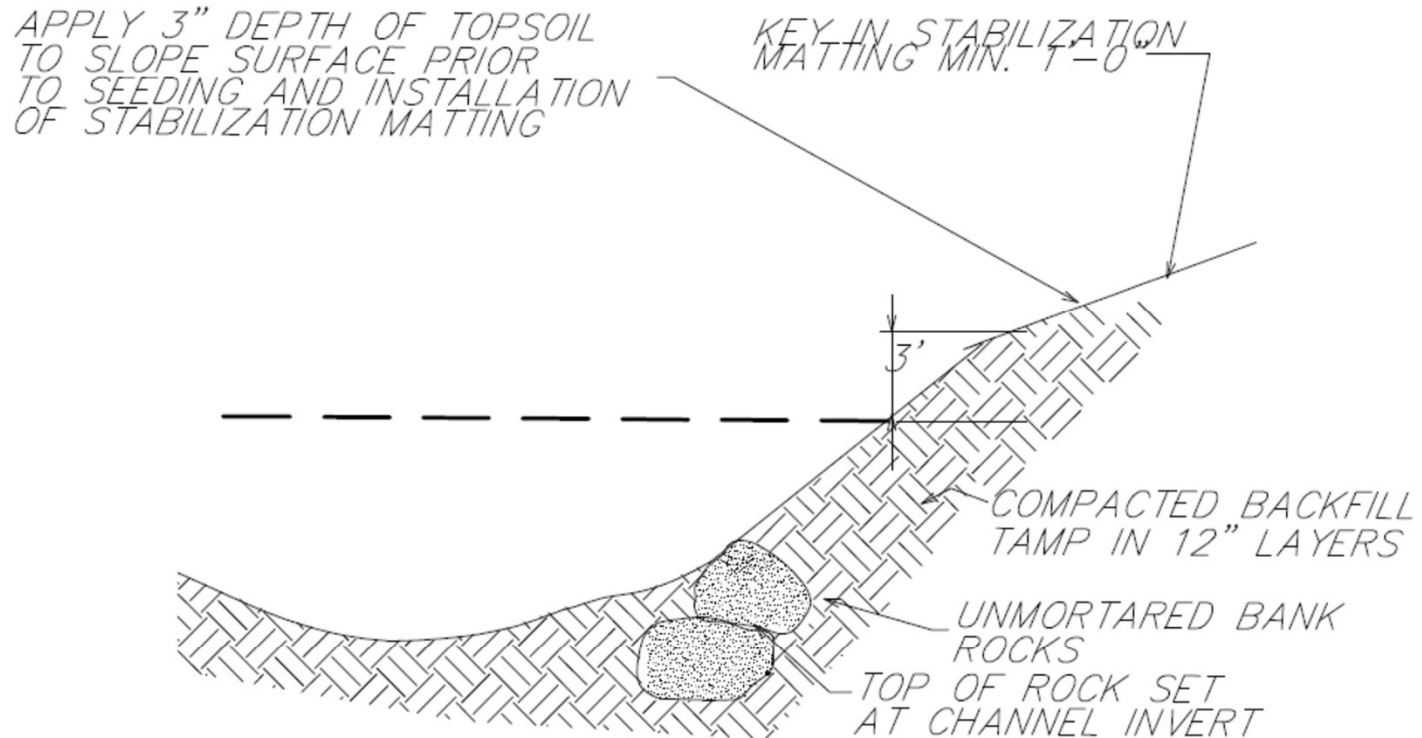
Springfield Lake Outfall Proposed Channel Improvements





Springfield Lake Outfall

Proposed Channel Improvements



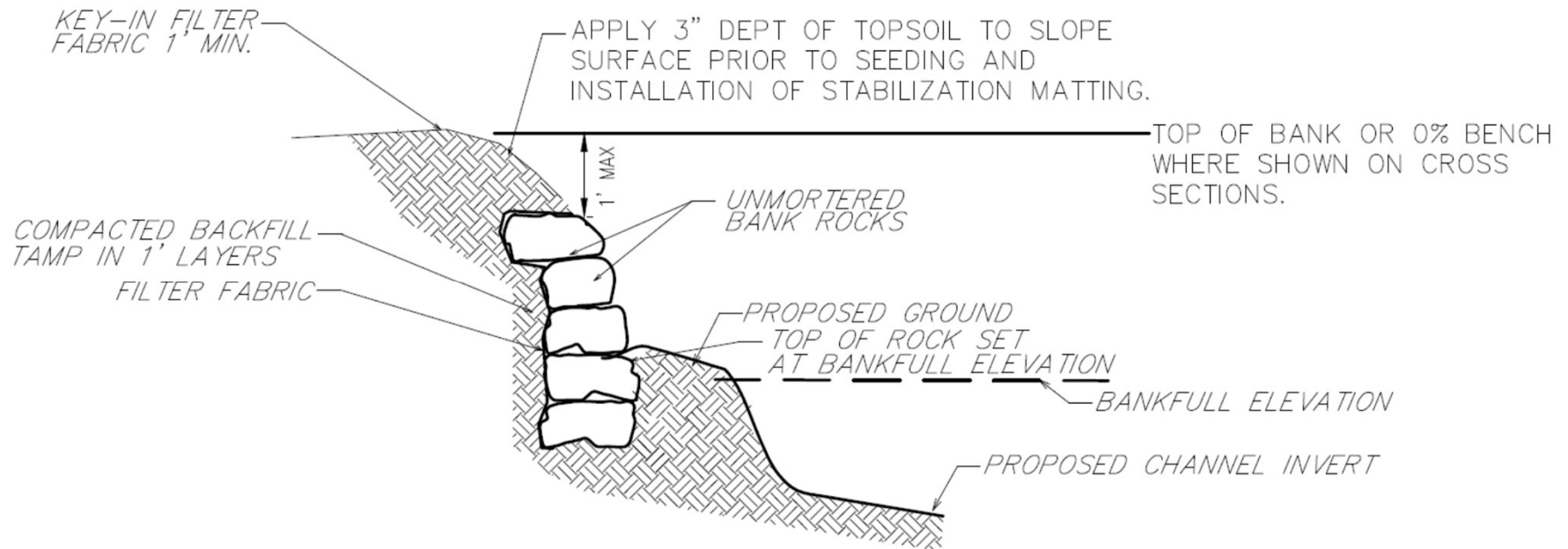
ROCK TOE PROTECTION
CROSS SECTION – TYPICAL

NOT TO SCALE



Springfield Lake Outfall

Proposed Channel Improvements



ROCK BANK STABILIZATION
SECTION— TYPICAL

NOT TO SCALE



Springfield Lake Outfall Q&A

- Questions?
- For more information, please visit our project webpage at
<https://www.summitengineer.net/projects/SWMD-Springfield-Lake-Outlet-and-Channel-Improvements.html>