

SUMMIT COUNTY INFORMATION

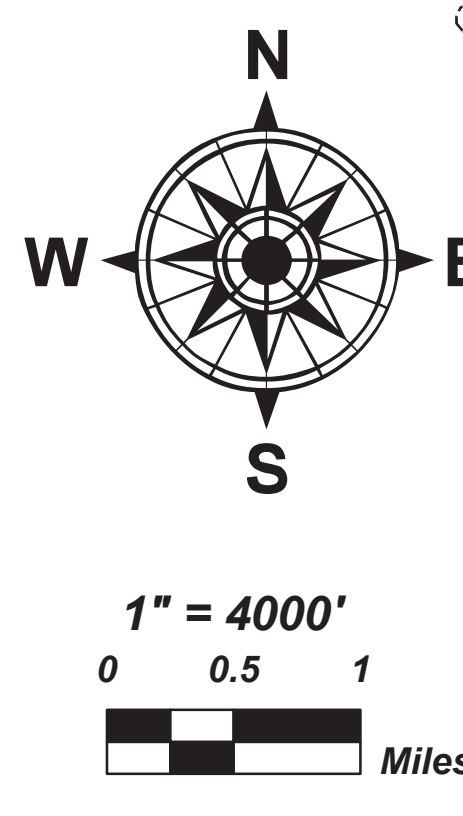
SUMMIT COUNTY WAS FORMED MARCH 3, 1840
AREA OF SUMMIT COUNTY 419.38 SQ. MI.

POPULATION	(2010 CENSUS)
SUMMIT COUNTY	541,781
CITY OF AKRON	199,110
CITY OF BARBERTON	26,550
CITY OF CUYAHOGA FALLS	49,652
CITY OF FAIRLAWN	23,262
CITY OF HUDSON	25,699
CITY OF MACEDONIA	5,012
CITY OF MUNROE FALLS	14,227
CITY OF NORTON	12,081
CITY OF STOW	34,837
CITY OF TALLMADGE	17,257
CITY OF TWINSBURG	18,795
BATH TOWNSHIP	9,702
BOSTON TOWNSHIP	707
COPLY TOWNSHIP	17,304
COUNTY TOWNSHIP	10,945
NORTHFIELD TOWNSHIP	2,517
RICHFIELD TOWNSHIP	5,839
SAGAMORE HILLS TOWNSHIP	10,947
SPRINGFIELD TOWNSHIP	14,644
TWINSBURG TOWNSHIP	2,828
VILLAGE OF BOSTON HEIGHTS	1,300
VILLAGE OF CLINTON	1,214
VILLAGE OF LAKEMORE	3,068
VILLAGE OF MOGADORE	2,846
VILLAGE OF PENNSULA	3,677
VILLAGE OF REMINDERSVILLE	3,660
VILLAGE OF RICHFIELD	3,404
VILLAGE OF SILVER LAKE	2,519

ROAD MILEAGE

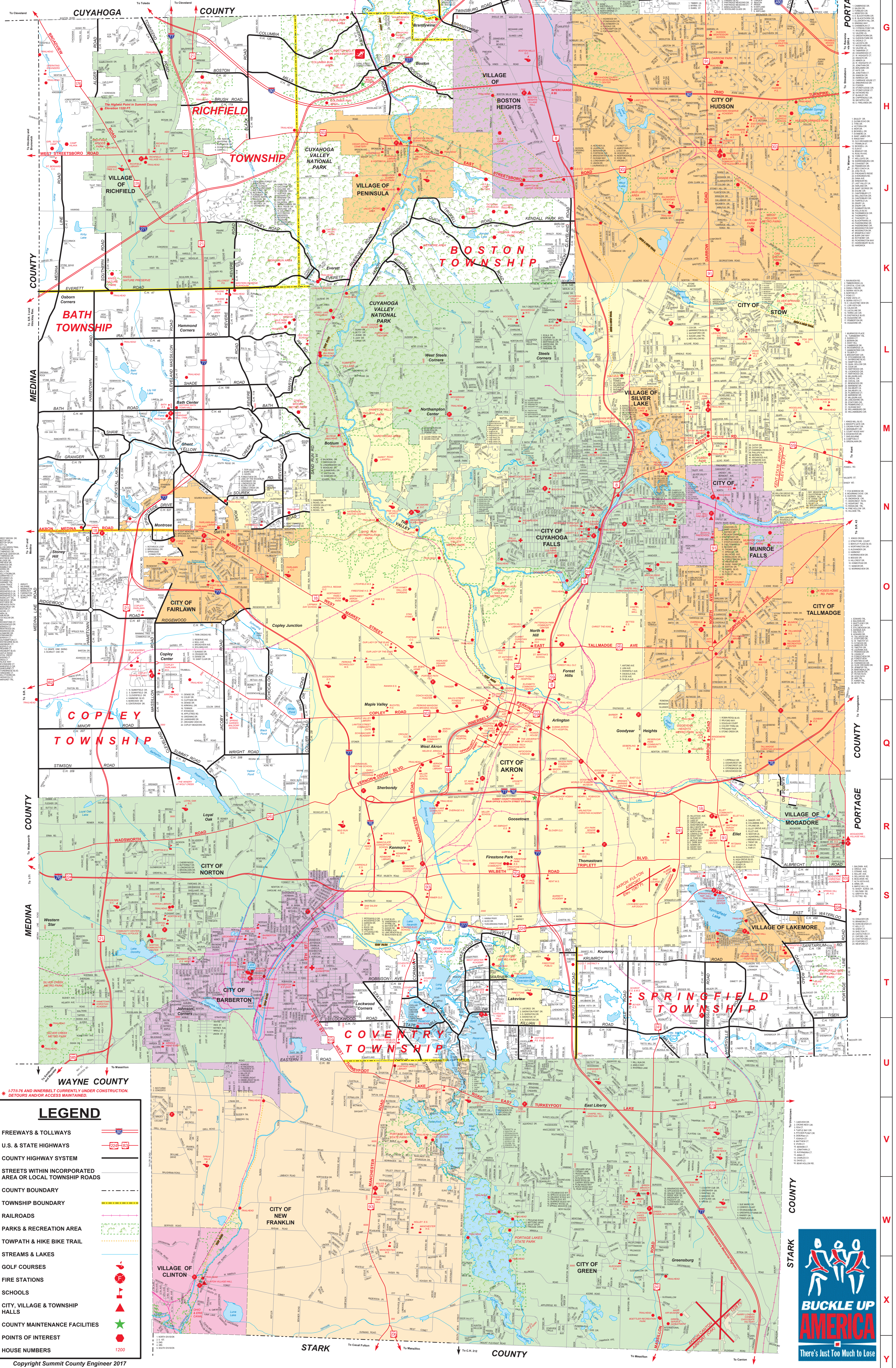
OHIO TURNPIKE	13.61 MI.
INTERSTATE	79.65 MI.
STATE ROADS	297.82 MI.
COUNTY ROADS	181.55 MI.
TOWNSHIP ROADS	348.58 MI.
CITY & VILLAGE ROADS	1870.13 MI.

This Map has been created by the Summit County Engineers Office G.I.S. Dept.



Alan Brubaker, P.E., P.S.
MISSION OF THE SUMMIT COUNTY ENGINEER

Our mission is to serve the Summit County Community by maintaining and improving our region's infrastructure, encouraging economic development, and ensuring a safe and efficient transportation system while protecting the environment.



LEGEND

- FREWAYS & TOLLWAYS
- U.S. & STATE HIGHWAYS
- COUNTY HIGHWAY SYSTEM
- STREETS WITHIN INCORPORATED AREA OR LOCAL TOWNSHIP ROADS
- COUNTY BOUNDARY
- TOWNSHIP BOUNDARY
- RAILROADS
- PARKS & RECREATION AREA
- TOWPATH & HIKE BIKE TRAIL
- STREAMS & LAKES
- GOLF COURSES
- FIRE STATIONS
- SCHOOLS
- CITY, VILLAGE & TOWNSHIP HALLS
- COUNTY MAINTENANCE FACILITIES
- POINTS OF INTEREST
- HOUSE NUMBERS

